

<sup>1.</sup> Tone LERHER, <sup>2.</sup> Matjaž ŠRAML, <sup>3.</sup> Matej BOROVIŠEK, <sup>4.</sup> Iztok POTRČ

## MULTI-OBJECTIVE OPTIMIZATION OF AUTOMATED STORAGE AND RETRIEVAL SYSTEMS

<sup>1, 3, 4.</sup> UNIVERSITY OF MARIBOR, FACULTY OF MECHANICAL ENGINEERING, SMETANOVA 17, MARIBOR, SLOVENIA

<sup>2.</sup> UNIVERSITY OF MARIBOR, FACULTY OF CIVIL ENGINEERING, SMETANOVA 17, MARIBOR, SLOVENIA

**ABSTRACT:** The multi-objective optimization of automated warehouse is discussed and evaluated in present paper. Since most of researchers in material handling community had performed optimization of decision variables with single objective function only (usually named with minimum travel time, maximum throughput capacity, minimum cost, etc.), the multi-objective optimization (time-cost-quality) will be presented in present research. For the optimization of decision variables in objective functions, the method with genetic algorithms is used. The main objective of our contribution is to determine the performance of the system according to the multi-objective optimization technique.  
**KEYWORDS:** automated warehouses, performance, multi-objective function, optimization

### INTRODUCTION

Warehouses with their basic purpose are an absolute necessity for a continuous and optimum operation of the production and distribution processes [1]. Warehouses are needed for various reasons, especially [1]: (i) to facilitate the coordination between the production and customer demand by buffering products for a certain period of time, (ii) to accumulate and consolidate products from various producers for combined shipments, (iii) to provide same-day delivery in production and to important customers, (iv) to support products customization activities, such as packaging, final assembly etc. [1] There are two categories of warehousing systems, named as mechanized warehousing systems (conventional warehouses) and automated warehousing systems (automated storage and retrieval systems).

Conventional warehousing systems are characterized by manually operated equipment managed and directed by a warehousing management system. Manually operated forklift trucks equipped with onboard terminals linked to a warehouse management systems, provide transportation, storage and retrieval (order picking) of transport unit loads. The onboard terminals display instructions to operators as well as providing them with the ability to communicate finished tasks. The presented technology increase efficiency by eliminating paper instruction and optimize the work routine of operators. The primary physical characteristics of the conventional warehouse facility are a low profile and therefore large floor area. Clear high is determined by the reach of a selected forklift truck. Traditionally the conventional warehouse facilities are less expensive and easier to build compared to automated warehouse facilities.

Today the conventional warehousing systems are characterized by automated guided vehicle technology with automated forklift trucks managed and directed by a warehousing management system. Today numerous manufacturers offer automated forklift trucks (Jungheinrich, Still, Linde, etc). Automated forklift trucks utilize guide path technology in which an energized, floor-embedded wire created an electromagnetic field which activated sensors onboard the automated forklift to follow the path. A self guidance system provides the automated forklift with a free-roaming capability. Automated forklift trucks incorporate the primary features of manually operated forklifts including side shifting, sensors to determine the presence or absence of transport unit load at assigned interfaces, and the ability to adjust vertical and horizontal positions of the forks to store or pick up the transport unit load.

Automated storage and retrieval systems (AS/RS) are characterized by high bay warehouses with automated storage and retrieval machine which store and retrieve transport unit loads. System configurations include single- and multiple-deep and single- and multi-shuttle variants. All systems utilize storage and retrieval machine equipped with hoisted carriage which support storage/retrieval shuttle tables or self powered rack entry modules. Shuttle equipped hoisted carriage support single- and multi-shuttle system; whereas self powered rack entry modules support single- and multiple-deep

system. Pick up/deposit queue conveyors usually at the front of rack structure generally provide an interface between storage and retrieval machine and a delivery system. This delivery system can be as simple as manually operated forklift trucks or as sophisticated as automated guided vehicles. The disadvantage of those systems is non-adaptable to future changes and relatively high investment due to conventional warehousing systems.

Since the automated storage and retrieval systems had gained more attention of the material handling research community as the conventional warehousing systems, some previous work regarding design of automated systems will be briefly presented.

The design of automated warehouses has been studied by several authors. One of the first publications in the subject of optimizing the warehouses is represented by the work of Basan et al. [2], who have analyzed optimum dimensions of the warehouse, considering the chosen warehouse volume of the warehouse in dependence on various storage strategies. Karasawa et al. [3] have presented a design model of the AS/RS. In their work, the objective function is defined as non-linear and multi-variable, consisting of three main variables: (i) the number of storage and retrieval (S/R) machines, (ii) the length of the SR and (iii) the height of the SR; and also of constant values: cost of buying the land, cost of building the warehouse, cost of buying the storage rack (SR) construction and cost of buying S/R machines. The main disadvantage of this model [3] is that it refers only to the single command cycle. Ashayeri et al. [4] have presented a design model of the AS/RS that enables the determination of the main influential parameters when designing warehouses. Unlike Karasawa et al. [3], they have considered the warehousing operation of the dual command cycle. Bafna et al. [5] and Perry et al. [6] have used a combination of the analytical model and the system of discrete event simulations when designing the warehouse. Perry et al. [6] have used a special search method to determine optimum solutions for the AS/RS, which they have included in the simulation model of the AS/RS. As a measure of the efficiency of the system, they have used the throughput capacity of the warehouse, in dependence on the number of S/R machines and the number of workplaces. The design of warehouses with regard to the influence of the storage policy has been presented by Rosenblatt and Roll [7]. When describing total costs, the authors have taken into account: (i) cost of building the warehouse, (ii) cost of buying storage equipment, (iii) costs arising from overloading the warehousing system (temporary shortage of the storage space) and (iv) costs that depend on a particular storage policy. An in-depth overview of the area of designing and controlling warehouses has been presented by Rouwenhorst et al. [8] in the form of the methodology of designing warehousing systems. The design process is presented with a structured approach, which takes into account the strategic, tactical and operational level of decision making. Gu et al. [9] have presented a comprehensive review of research on warehouse operation. Roodbergen and Vis [10] have presented a comprehensive explanation of the current state of the art in AS/RS.

Warehouse design according to optimization of the travel time, cost and quality considerations had been already considered, although researchers did not provide multi-objective approach in their study. The described models refer only to the single-objective optimization approach of AS/AR [3], [4], [5], [6]. The difference between approaches and models lies in the cost of elements included in the objective function, the decision on considered variables and the use of optimization techniques. Less has been done for multi-objective optimization approach of automated warehouses, although studies on multi-objectives have received a close attention in some references (Hwang et al. [11]; Steuer, R. E. [12]; Dev, K. [13]).

Beside mentioned papers, our research of designing automated warehouses can also be found in [15], [16], [17], [18]. Generally, each warehouse involves a multidimensional problem. A design of the warehouse should therefore be managed with the consideration of (i) **travel time**, (ii) **cost** and (iii) **quality**. Successful warehouse designer should insure completion of the warehouse due to minimal travel time, minimal cost, and to the demanded quality specifications. The purpose of our present paper is to analyze the design and optimization of the automated warehouse, according to multi-objective optimization approach (travel time - cost - quality). The adopted approach is to apply multi-objective function and discrete optimization in order to create the most efficient design of automated warehouses. Due to non-linear, discrete, multi-variable and most important multi-objective function, the heuristics method with genetic algorithms [19] is used. The significant part of our research lies in the creation of a computer aided design tool for designing and optimizing automated warehouses according to multi-objective optimization approach.

## MODEL DESCRIPTION

The primary purpose of this section is to present the optimization model which aims to resolve travel time - cost - quality tradeoff problems. The model minimizes travel time, minimize cost and maximize quality of a warehouse according to project restraints and conditions.

**Minimizing travel time.** Travel time in most material handling facilities (in our case warehouses) relates to the movement of material handling devices like forklifts, S/R machines, etc. For the calculation of the mean travel time for example the single or dual command cycle, different

approaches have been used. Some researchers are using analytical travel time models, while others are using discrete simulation. Travel time could be minimized by using efficient drives for faster movement and hoisting of the material handling devices in the horizontal/vertical direction. Beside the efficient drives, the length and the height of the warehouse (storage rack) should be in the appropriate relationship (e.g. ideally when the shape factor  $b = 1$ ). The travel time is inversely depended from the throughput capacities. According to the values of the travel time and throughput capacities, the number of the material handling devices (reach truck, very narrow aisle VNA truck, S/R machine) is defined. The objective is to minimize the travel time which is described as follows:

$$\text{function: } \min f_T(x_i); \quad i \in [1,10] \quad (1)$$

**Minimizing cost.** Cost is comparatively relative to travel time. Application of material handling devices with efficient drives (faster movement and hoisting) will no doubt increase the cost of the warehouse and the maintenance cost of material handling devices. For the relationship between cost and travel time, one can use a discrete function or continuous (linear/quadratic) function. The objective is to minimize the cost which is described as follows:

$$\text{function: } \min f_C(x_i); \quad i \in [1,10] \quad (2)$$

**Maximizing quality.** The quality could be defined in many ways. In our proposed model, the quality is expressed with the number of material handling devices in the warehouse. If we have more than one material handling device in the warehouse, the probability that “everything will be going well” is higher than with only one material handling device. Thus, the quality actually represents the reliability of the warehouse in our model. Quality is comparatively relative to cost. The objective is to maximize the quality which is described as follows:

$$\text{function: } \max f_Q(x_i); \quad i \in [1,10] \quad (3)$$

The independent variables with lower and upper bound, which are used in the above mentioned functions, are expressed as follows:

$$\text{real: } 0 < x_1, x_2, x_3, x_4, x_5, x_6, x_9, x_{10} \leq 1 \quad (4)$$

$$\text{integer: } 1 < x_7, x_8 < N \quad (5)$$

where  $x_1$  refers to the selection of the MHD (reach truck, VNA truck, S/R machine),  $x_2$  refers to the velocity of the MHD for driving in the horizontal direction,  $x_3$  refers to the velocity of the MHD for lifting in the vertical direction,  $x_4$  refers to the maximum lift height of the MHD,  $x_5$  refers to the width of the picking aisle,  $x_6$  refers to the quality (reliability) of the MHD,  $x_7$  refers to the number of picking aisles,  $x_8$  refers to the number of MHD,  $x_9$  refers to the height of the warehouse,  $x_{10}$  refers to the length of picking aisles.

The proposed model consists of decision variables, operational parameters and costs of material handling devices, land and warehouse building. When designing the model, the following assumptions and notations had been applied:

- The warehouse is divided into picking aisles with SR on both sides; therefore there are double SR between the picking aisle and single SR along the warehouse walls. The I/O location of the warehouse is located on the lower, extreme left side of the warehouse (Figure 1).
- The number of the MHD is less than or equal to the number of picking aisles ( $n_{MHD} \leq R$ ).
- The MHD can travel in the cross-warehouse aisle, which enables access to adjacent picking aisles.
- The SR has a rectangular shape, whereby the I/O location of the SR is located on the lower left side of the SR (Figure 2).
- The MHD enables the operation of SC, to which a variable share of travel time for travelling in the cross aisle must be added.

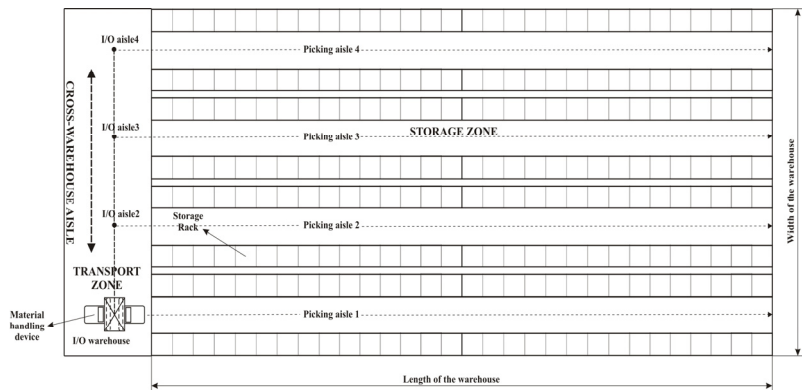


Figure 1. The layout of the warehouse

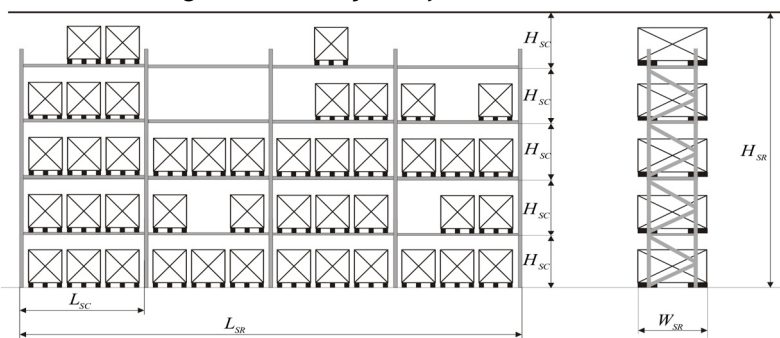


Figure 2. The side view of the storage rack

- Drive characteristics of the MHD velocity  $v$ , as well as the length and height of the SR are known.
- The length and height of the SR are large enough for the S/R machine to reach its maximum velocity  $v_{max}$  in the horizontal direction and in vertical direction.
- Randomized storage is used, which means that any rack opening in the storage compartment is equally likely to be selected for the storage or retrieval assignment.

The following notation is introduced:

AS/RS	automated storage and retrieval systems	$W_{WAR}$	width of the warehouse
S/R	storage and retrieval	$W_{SR}$	width of the storage rack
SR	storage rack	$W_{SC}$	width of the storage compartment
SR	single command	$T$	time of one shift
$T(SC)$	mean single comm. travel time	$n_{MHD}$	number of MHD
$T(TBA)$	travel between aisle time component	$R$	number of picking aisles
MHD	material handling device	$n$	number of TUL in storage compartment
VNA	very narrow aisle	$v$	velocity
TUL	transport unit load	$v_{max}$	maximum velocity
$I/O_{aisle}$	input/output location of picking aisle	$v_x$	velocity in the horizontal direction
$I/O_{war}$	input/output location of warehouse	$v_y$	velocity in the vertical direction
$b$	shape factor	$t_{xy}$	travel time
$f(x_i)$	objective function	$t_x$	travel time in the horizontal direction
$x$	variable	$t_y$	travel time in the vertical direction
$L_{WAR}$	length of the warehouse	$I_{MHD}$	investment for MHD per piece
$L_{SR}$	length of the storage rack	$I_{LAND}$	investment for land
$L_{SC}$	length of the storage compartment	$I_{WAR}$	investment for building
$H_{WAR}$	height of the warehouse	$C_{SRM}$	maximum cost of MHD
$H_{SR}$	height of the storage rack	$C_{LAND}$	cost of land per square meter
$H_{SC}$	height of the storage compartment	$C_{WAR}$	cost of building per cube meter
		$Q_{MHD}$	quality of material handling device

The proposed model is represented with a mathematical model, which includes decision variables, all relevant operational, physical parameters and investment costs.

#### Definition of the proposed model. Travel time definition

Proposed model is based on the single command cycle. The operation of the SC encompasses either the storage or the retrieval sequence. The SC in the warehouse combines travelling of the selected MHD in the cross warehouse aisle and in the picking aisle. The efficiency of the SC is based on: (i) travelling of the selected MHD in the picking aisle  $i$  and (ii) travelling of the selected MHD to adjacent picking aisle in the cross-warehouse aisle.

##### Travelling of the MHD in the picking aisle $i$

Under travelling of the selected MHD in the  $i^{\text{th}}$  picking aisle, the selected MHD is capable of visiting a single storage or retrieval location. Let the storage (or retrieval) point be represented by  $P(x, y)$  where  $0 \leq x \leq L$  and  $0 \leq y \leq H$ .

For the S/R machine and VNA truck, the travel time  $t_{xy}$  from the  $I/O_{aisle(i)}$  location will be  $t_{xy} = \text{Max}(t_x, t_y)$ , where  $t_x$  is the horizontal travel time and  $t_y$  is the vertical travel time. For the reach truck, the travel time  $t_{xy}$  from the  $I/O_{aisle(i)}$  location will be  $t_{xy} = t_x + t_y$ , where  $t_x$  is the horizontal travel time and  $t_y$  is the vertical travel time. For calculation of the mean single command travel time for the S/R machine and VNA truck, the FEM 9.851, had been used [21]. For calculation of the mean single command travel time for the reach truck, the modified FEM 9.851, had been used [21].

The calculation of the mean single command travel time for the S/R machine and VNA truck is calculated as follows:

Time for travelling in the horizontal direction to point  $P_1$ :

$$t_{xP1} = \frac{L}{5v_x} \quad (6)$$

Time for moving in the vertical direction to point  $P_1$ :

$$t_{yP1} = \frac{2H}{3v_y} \quad (7)$$

Time for travelling in the horizontal direction to point  $P_2$ :

$$t_{xP2} = \frac{2L}{3v_x} \quad (8)$$

Time for moving in the vertical direction to point  $P_2$ :

$$t_{yP2} = \frac{H}{5v_y} \quad (9)$$

The maximum travel time in selected picking aisle  $i$  from  $I/O$  point to point  $P_1$  in the horizontal or in the vertical direction, is equal to the next expression:

$$t_{p1} = 2\text{MAX}(t_{xP1}, t_{yP1}) \quad (10)$$

The maximum travel time in selected picking aisle  $i$  from  $I/O$  point to point  $P_2$  in the horizontal or in the vertical direction, is equal to the next expression:

$$t_{p2} = 2MAX(t_{xp2}, t_{yp2}) \quad (11)$$

The calculation of the mean single command travel time for the reach truck is calculated as follows:

Times  $t_{xp1}$ ,  $t_{yp1}$ ,  $t_{xp2}$ ,  $t_{yp2}$  equals above expressions (6), (7), (8) and (9).

The maximum travel time in selected picking aisle  $i$  from I/O point to point  $P_1$  in the horizontal and in the vertical direction, is equal to the next expression:

$$t_{p1} = 2(t_{xp1} + t_{yp1}) \quad (12)$$

The maximum travel time in selected picking aisle  $i$  from I/O point to point  $P_2$  in the horizontal and in the vertical direction, is equal to the next expression:

$$t_{p2} = 2(t_{xp2} + t_{yp2}) \quad (13)$$

The mean single command travel time  $T(SC)_{picking\ aisle}$  in selected picking aisle  $i$ , becomes:

$$T(SC)_{picking\ aisle} = \frac{1}{2}(t_{p1} + t_{p2}) \quad (14)$$

Travel between aisles time component (TBA) corresponds to travelling of the selected MHD from I/O<sub>war</sub> location to  $i^{th}$  picking aisle.

$$T(TBA) = \frac{W_{war}}{v_x} \quad (15)$$

The mean single command travel time in the warehouse for the selected MHD is represented with the following expression:

$$T(SC) = T(SC)_{picking\ aisle} + T(TBA) \quad (16)$$

The throughput capacity of the warehouse for the selected MHD is represented with the following expression:

$$\lambda = \frac{T}{T(SC)} \cdot n_{MHD} \quad (17)$$

### Quality definition

The quality is defined according to next expression:

$$Q = Q_{MHD} \cdot n_{MHD} \quad (18)$$

$Q_{MHD}$  indicates the quality of MHD;  $n_{MHD}$  indicates the number of selected MHD.

### Cost definition

The investment in buying material handling devices per piece  $I_{MHD}$ :

$$I_{MHD} = C_{MHD} \cdot n_{MHD} \cdot C_{SRM} \quad (19)$$

$C_{MHD}$  indicates the normalized cost of the selected MHD,  $n_{MHD}$  indicates the number of selected MHD;  $C_{SRM}$  [EUR] indicates the maximum cost of MHD (in our case S/R machine that can serve more than one picking aisle).

The investment in buying the land per square meter  $I_{LAND}$ :

$$I_{LAND} = L_{WAR} \cdot W_{WAR} \cdot C_{LAND} \quad (20)$$

$L_{WAR}$  indicates the length of the warehouse [m],  $W_{WAR}$  indicates the width of the warehouse [m];  $C_{LAND}$  [EUR/m<sup>2</sup>] indicates the cost of the land per square meter.

The investment in building the warehouse per cube meter  $I_{WAR}$ :

$$I_{BUILDING} = L_{WAR} \cdot W_{WAR} \cdot H_{WAR} \cdot C_{WAR} \quad (21)$$

$L_{WAR}$  indicates the length of the warehouse [m],  $W_{WAR}$  indicates the width of the warehouse [m];  $H_{WAR}$  indicates the height of the warehouse [m];  $C_{WAR}$  [EUR/m<sup>3</sup>] indicates the cost of the building per cube meter.

Total cost TC:

$$TC = I_{MHD} + I_{LAND} + I_{BUILDING} \quad [EUR] \quad (22)$$

### Pareto optimization design

The objective used in our contribution is to optimize travel time - cost - quality which is formulated as a multi objective problem. When optimizing decision variables  $x_i$ ,  $i \in [1,10]$  one must take into account certain constraints referring to: (1) geometrical constraints of the warehouse, (2) the minimum required warehouse volume  $q$  and (3) the throughput capacity  $\lambda$  has to be higher than or equal to the required throughput capacity, (4) the number of MHD has to be lower than or equal to the number of picking aisles ( $n_{MHD} \leq R$ ).

To search for an optimal trade of among travel time - cost - quality, the NSGA II genetic algorithm was used [22]. The algorithm is designed for solving multi objective problems. The output of the algorithm is a large number of solutions lying on or near the Pareto optimal frontier.

### CASE STUDY: ILLUSTRATIVE EXAMPLE AND SIMULATION RESULTS

In this chapter a case study with the illustrative example and simulation results is presented. With the optimization of decision variables  $x_i$ ,  $i \in [1,10]$  in the proposed model, the optimal design of

warehouse is defined. The input data for this example are based mainly on information from practice and sales representatives of companies supplying the warehouse equipment.

With regard to the following project constraints: the length of the warehouse/storage rack  $L_{SR}$  (1 - 100) m, the width of the warehouse and the height of the warehouse/storage rack  $H_{WAR}$  (1 - 18) m, the warehouse volume  $q_{min} = 1000$  TUL, the length of the storage compartment  $L_{SC} = 2800$  mm, the height of the storage compartment  $H_{SC} = 1600$  mm, the depth of the storage compartment  $W_{SC} = 1200$  mm, the number of TUL in the storage compartment  $n = 3$ , the number of aisles  $R_{MAX} = 100$ , the maximum cost of MHD  $C_{MHD} = 250.000,00$  EUR, the cost of land per square meter  $C_{LAND} = 5,00$  EUR/m<sup>2</sup>, the cost of building per square meter  $C_{WAR} = 10,00$  EUR/m<sup>2</sup>. Operational parameters, parameters of material handling devices and costs all in normalized values, are presented in following tables.

The lower and upper bound of variables in Table 1 are expressed with normalized values that can be easily changed and have no impact on model structure or optimization process. The values presented in Table 1 demonstrate one selected study case.

The lower and upper bound of input data in Table 2 are expressed with normalized values that can be easily changed and have no impact on model structure or optimization process. The values presented in Table 2 demonstrate one selected study case.

Figure 3 show the results of Pareto optimal front of decision variables  $x_i, i \in [1,10]$  in the proposed model according to 5<sup>th</sup>, 20<sup>th</sup>, 200<sup>th</sup> generation. For the optimization of decision variable, the NSGA II algorithm had been used [22]. The primary reason using evolutionary algorithm is its ability to find Pareto optimal solution in a simulation run.

The optimization of decision variables  $x_i, i \in [1,10]$  was carried out according to the following evolutionary and genetics operators: the degree of crossover was set to 0.9; the degree of mutation was set to 0.1; the size of population was set to 100; the number of generations was set to 200. Values of crossover and mutation degrees were chosen in accordance with our extensive analyses and experience of researchers who have been engaged in the development and application of the GA method. The size of population depends greatly on the number of decision variables, which indirectly influences the necessary number of generations. Due to the proposed decision variables  $x_i, i \in [1,10]$  the comprehensive analyses has indicated that in most cases the GA finds Pareto optimal front already with 200 generations.

Diagram I on figure 3 show that GA forms after 5<sup>th</sup> generation a chosen number of random designs of the warehouse for the selected type of MHD (reach truck, VNA truck and S/R machine). Warehouses that do not follow the required constraints, defined at the optimization of decision variables, are deleted and not considered in next generations. This means that with the increase in the number of generation, the good solutions are continually eliminated and replaced by better solutions. In this way the Pareto optimal solutions can be found. The number of randomly chosen designs of the warehouse is the same as the size of the population  $n$  or in most cases smaller than  $n$ .

Diagram III on figure 3 illustrate after 200<sup>th</sup> generation that warehouses, marked with different symbols for reach truck, VNA truck and S/R machine, present the Pareto optimal frontier of solutions. The response to the optimization of decision variables  $x_i, i \in [1,10]$  in the proposed model, indicate the

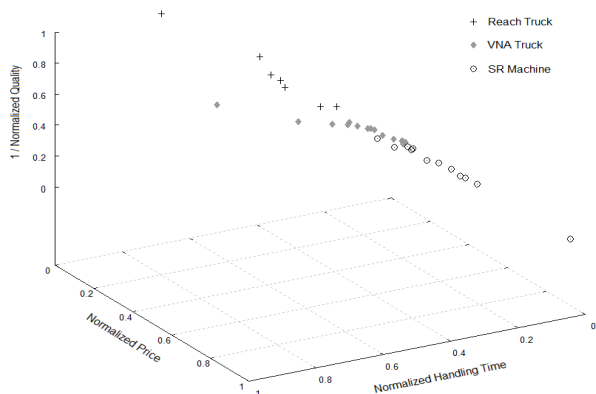
Table 1: Independent variables with lower and upper bounds according to one study case

Variables	Lower bound	Upper bound
variable $x_1$ , Reach truck		
variable $x_2$ , horizontal velocity $v_x$	0,1	0,4
variable $x_3$ , vertical velocity $v_v$	0,1	0,3
variable $x_4$ , maximum lift height $h_3$	0,1	0,4
variable $x_5$ , aisle width $A_{st}$	0,9	1,0
variable $x_6$ , quality $Q$	0,1	0,4
variable $x_1$ , VNA truck		
variable $x_2$ , horizontal velocity $v_x$	0,4	0,7
variable $x_3$ , vertical velocity $v_v$	0,4	0,7
variable $x_4$ , maximum lift height $h_3$	0,4	0,8
variable $x_5$ , aisle width $A_{st}$	0,5	0,9
variable $x_6$ , quality $Q$	0,4	0,7
variable $x_1$ , S/R machine		
variable $x_2$ , horizontal velocity $v_x$	0,7	1,0
variable $x_3$ , vertical velocity $v_v$	0,7	1,0
variable $x_4$ , maximum lift height $h_3$	0,8	1,0
variable $x_5$ , aisle width $A_{st}$	0,1	0,5
variable $x_6$ , quality $Q$	0,7	0,9
Other independent variables		
variable $x_7$ , number of picking aisles $R$	1	N
variable $x_8$ , number of MHD $n_{MHD}$	1	N
variable $x_9$ , height of the warehouse $H_{WAR}$	1	N
variable $x_{10}$ , length of the storage rack $L_{SR}$	0,1	1,0

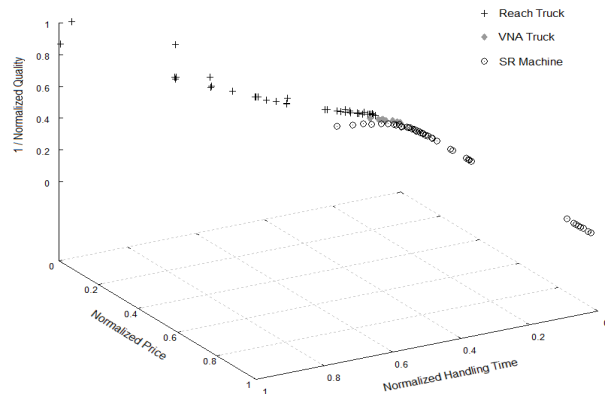
Table 2: Dependent variables with lower and upper bounds according to one study case

Input data	Lower bound	Upper bound
Reach truck		
cost of buying reach truck $C_{RT}$	0,1	0,3
VNA truck		
cost of buying VNA truck $C_{VNAT}$	0,3	0,6
S/R machine		
cost of buying S/R machine $C_{SRM}$	0,6	1,0
Other dependent variables		
Cost of warehouse $C_{WAR}$	0,1	1,0

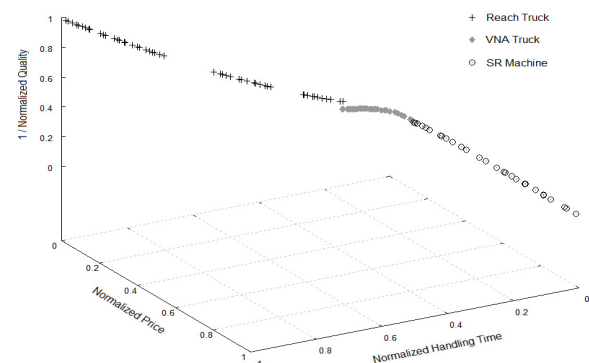
optimal investment (cost) for the warehouse due to selected material handling device (travel time) and reliability (quality) of the system.



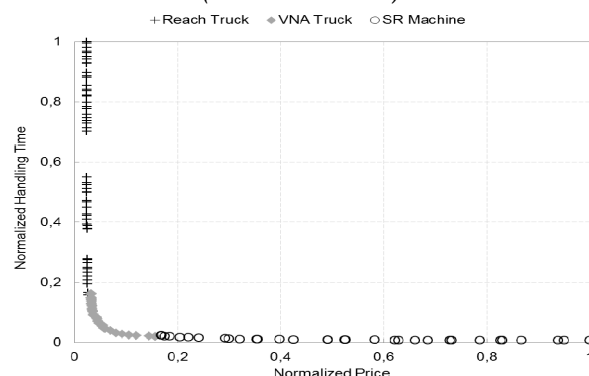
(I.) The first Pareto front after 5 generations (smaller is better)



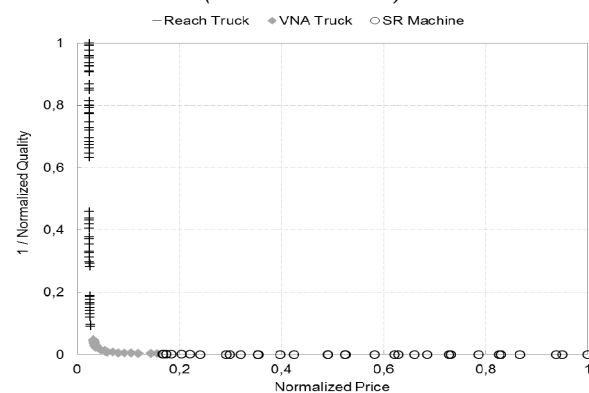
(II.) The first Pareto front after 20 generations (smaller is better)



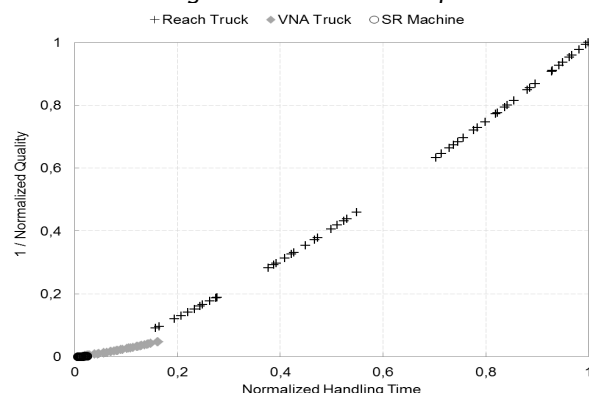
(III.) The final Pareto front after 200 generations (smaller is better)



(IV.) The final Pareto front in terms of normalized handling time and normalized price



(V.) The final Pareto front in terms of inversed normalized quality and normalized price



(VI.) The final Pareto front in terms of inversed normalized quality and normalized handling time

Figure 3. The layout of Pareto optimal fronts

The Pareto optimal frontier of solutions could be very useful information for the warehouse designer in the early stage of warehouse design. According to the results in diagrams IV, V, VI on figure 3, a single solution from the Pareto optimal frontier could be selected as the representative solution for the warehouse design. For example, if the expected throughput capacity is high and there is no limitation in height, one could choose the S/R machine as the representative material handling device. The selection of the S/R machine as the representative material handling device has impact on relatively high quality and relatively high cost. In this case the investment in the warehouse could be excessive in comparison with the selection of VNA truck or reach truck.

Opposite, if the expected throughput capacity is low and there is a limitation in height, one could choose the VNA truck or reach truck as the representative material handling device. In the same way as before, according to the results in diagrams IV, V, VI on figure 3, a single solution from the Pareto optimal frontier of solutions could be selected as the representative solution for the warehouse design. The selection of the VNA truck or reach truck as the representative material handling device has impact on good quality and relatively low cost. In this case the investment in the warehouse is moderate in comparison with the selection of S/R machine.

**CONCLUSIONS**

Automated warehouses are very expensive and should therefore be carefully designed. The conventional design process is a time-consuming manual process, which depends mostly on the experiences of designers. Therefore the proposed model for design and optimization of automated warehouses was presented. The main module in the proposed model, the multi-objective optimization approach, which minimizes travel time, cost and quality, was presented. The usefulness of the proposed model was presented in a case study involving the design of a warehouse. The results of the proposed model could be useful tool for the warehouse designer in the early stage of warehouse design.

**REFERENCES**

- [1] Bartholdi, J. J. (2002) *Warehouse and distribution science*. School of Industrial and System Engineering, Georgia Institute of Technology, Atlanta.
- [2] Bassan, Y., Roll, Y., Rosenblatt, M. J. (1980) *Internal Layout Design of a Warehouse*, *AIIE Transactions*, vol. 12, no. 4, pp. 317-322.
- [3] Karasawa, Y., Nakayama, H., Dohi, S. (1980) *Trade-off analysis for optimal design of automated warehouses*, *International Journal of System Science*, vol. 11, no. 5.
- [4] Ashayeri, J., Gelders, L. F. (1985) *A microcomputer-based optimization model for the design of automated warehouses*, *International Journal of Production Research*, vol. 23, no. 4, pp. 825-839.
- [5] Bafna, K. M., Reed, R. (1972) *An Analytical Approach to Design of High-Rise Stacker Crane Warehouse Systems*. *Journal of Industrial Engineering*, vol. 4, no. 10, pp. 8-14.
- [6] Perry, R. F., Hoover, S. F., Freeman, D. R. (1983) *Design of Automated Storage and Retrieval Systems using Simulation Modeling*, Institute of Industrial Engineers, Atlanta, Georgia, ICAW Proceedings, pp. 57-63.
- [7] Rosenblatt, M. J., Roll, J. (1984) *Warehouse design with storage policy considerations*, *International Journal of Production Research*, vol. 22, no. 5, pp. 809-821.
- [8] Rouwenhorst, B., Reuter, B. (2000) *Warehouse design and control: Framework and literature review*, *European Journal of Operational Research*, vol. 122, no. 3, pp. 515-533.
- [9] Gu, J. Goetschalckx, M. and McGinnis, L. F. (2007) *Research on warehouse operation: A comprehensive review*. *European journal of operational research* 177, 1-21.
- [10] Roodbergen, K. J. and Vis, F. A. (2009) *A survey of literature on automated storage and retrieval systems*. *European journal of operational research* 194, 343-362.
- [11] Hwang, C.; Yoon, K. (1981) *Multiple Attribute Design Making: Methods and Applications*. Springer-Verlage, Berlin.
- [12] Steuer, R. E. (1986) *Multiple Criteria Optimization: Theory, Computation and Application*. Wiley, New York.
- [13] Dev, K. (1995) *Optimal for Engineering Design: Algorithms and Examples*. Prentice-Hall of India Private Limited, New Delhi.
- [14] Lerher, T., Potrc, I., Sraml, M. (2010) *Designing automated warehouses by minimising investment cost using genetic algorithms*. V: ELLIS, Kimberly Paige (ur.). *Progress in material handling research: 2010*. Charlotte: The Material Handling Industry of America, cop. 2010, pp. 237-253.
- [15] Lerher, T. (2005) *Model for designing automated storage and retrieval systems*, Ph.D. dissertation. Faculty of Mechanical engineering, University of Maribor, Slovenia, EU.
- [16] Potrc, I., Kramberger, J., Lerher, T., Sraml, M. (2004) *The design of automated storage and retrieval systems using a simulation modeling approach*. *Journal of mechanical Engineering*, vol. 50, no. 11, 504-529.
- [17] Potrc, I., Lerher, T. (2006) *The design and optimization of automated storage and retrieval systems*. *Journal of mechanical Engineering*, vol. 52, no. 5, str. 268-291.
- [18] Lerher, T., Potrc, I., Sraml, M. (2007) *A comprehensive model of designing automated storage and retrieval systems*. 8th Asia-Pacific Industrial Engineering & Management System and 2007 Chinese Institute of Industrial Engineers Conference [also] APIEMS & CIIE2007, Kaohsiung, Taiwan. *Service value innovation and challenges : proceedings of the 8th Asia-Pacific Industrial Engineering & Management System and 2007 Chinese Institute of Industrial Engineers Conference [also] APIEMS & CIIE2007, Kaohsiung, Taiwan, December 9-12*. Yunlin, Taiwan: Department of Industrial Engineering and Management, National Yunlin University of Science and Technology.
- [19] Holland, J.H. (1975) *Adaption in Natural and Artificial Systems*, MIT Press.
- [20] Kalyanmoy, D., Amrit, P., Agarwal, S., Meyarivan, T. (2002) *A fast and elitist multiobjective genetic algorithm: NSGA-II*. *IEEE Trans. Evol. Comp.*, vol 6, no. 2, pp. 182-197.
- [21] FEM Sextion IX. *Leistungsnachweise für Regalbediengeräte, Spielzeiten*. Blatt 9.851, 2001.
- [22] Deb, K.; Pratap, A.; Agarwal, S.; Meyarivan, T. 2002. *A fast and elitist multi objective genetic algorithm: NSGA-II*, *IEEE Transactions on Evolutionary Computation* 6(2): 182-197. doi:10.1109/4235.996017

